

Creating Your Own Pitt-Hosted Web Page

**Multimedia in Language Teaching
Workshop Series**

Robert Henderson Language Media Center

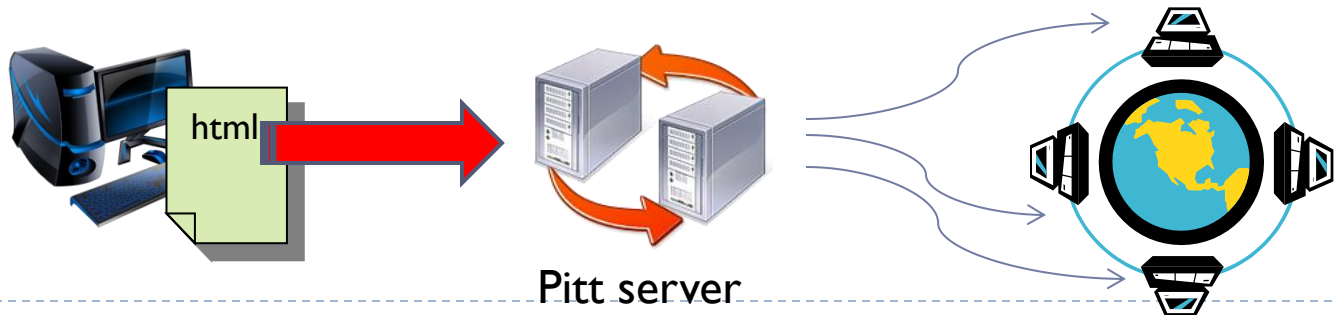
Na-Rae Han

Two Steps

1. Create a web page and save it as an **html** file on your home computer
 - ▶ You need: **html editing software**



2. Upload your **html** file onto your designated Pitt server location (where it is published to the web!)
 - ▶ You need: **secure file transfer (sftp) software**



Creating a Web Page File

- ▶ Web page documents ends in **.html** or **.htm**
 - ▶ Html files are just like text files, with .html extension name!
- ▶ **Html document example**
 - ▶ Create a file called **index.html**
 - ▶ Open file in **wordpad** or **notepad**, and type in following lines:

```
<html>
```

```
<body>
```

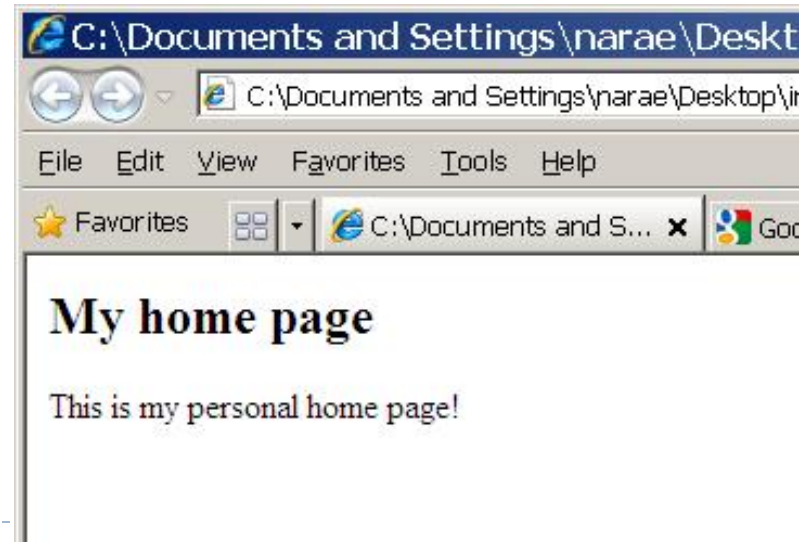
```
<h2>My home page</h2>
```

```
This is my personal home page!
```

```
</body>
```

```
</html>
```

- ▶ Now double click the file to open in browser. You should see →:

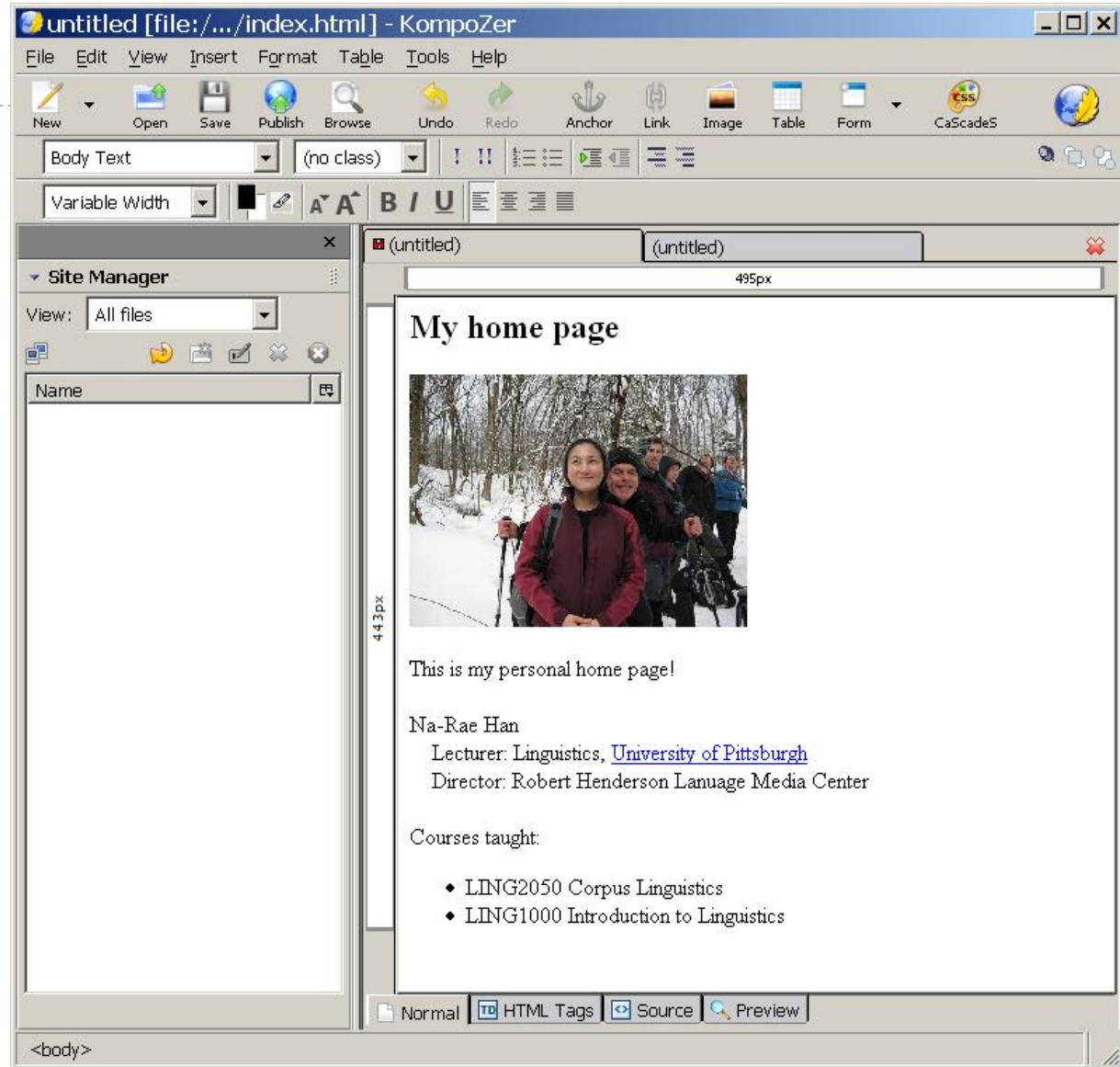


Editing html Files

- ▶ Learning html tags and hand-coding html files can be cumbersome
 - We can use WYSIWYG html editing software
- ▶ Popular html editors
 - ▶ **Adobe Dreamweaver CS5**
 - ▶ \$124 through [Pitt software purchase](#)
 - ▶ **KompoZer** (Free download)
 - ▶ We will use this one!
 - ▶ <http://www.kompozer.net/download.php>

KompoZer

- ▶ Free
- ▶ No installation necessary – download zip file, unzip into a directory, and the program is ready to use!



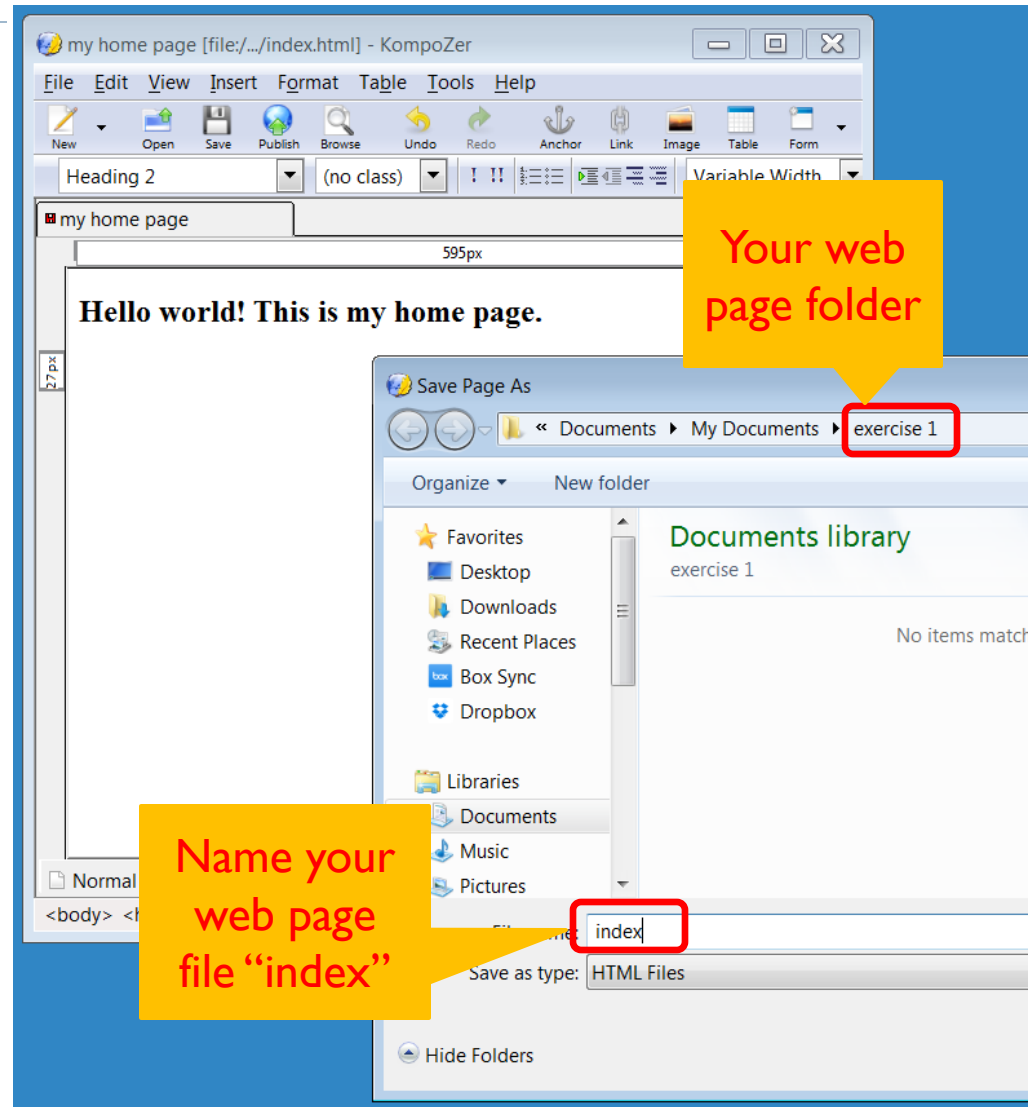
With KompoZer, You Can:

- ▶ Design layout of your page
- ▶ Change font face, color, size
- ▶ Create bullet-point/numbered lists
- ▶ Create tables
- ▶ Insert [html links](#) into your text
- ▶ Insert [pictures](#) into your page

Go on, try it.

- ▶ Open KompoZer, type in some text.
- ▶ Then save it:
 - ▶ File > Save As
 - ▶ When prompted for a **page title**, give it anything (“Charlie Brown’s home page”)
 - ▶ When prompted for **file name**, give “**index**”. Your html file therefore will be named “**index.html**”.

* Recommended: save index.html in a new folder, which will hold all your web page files.

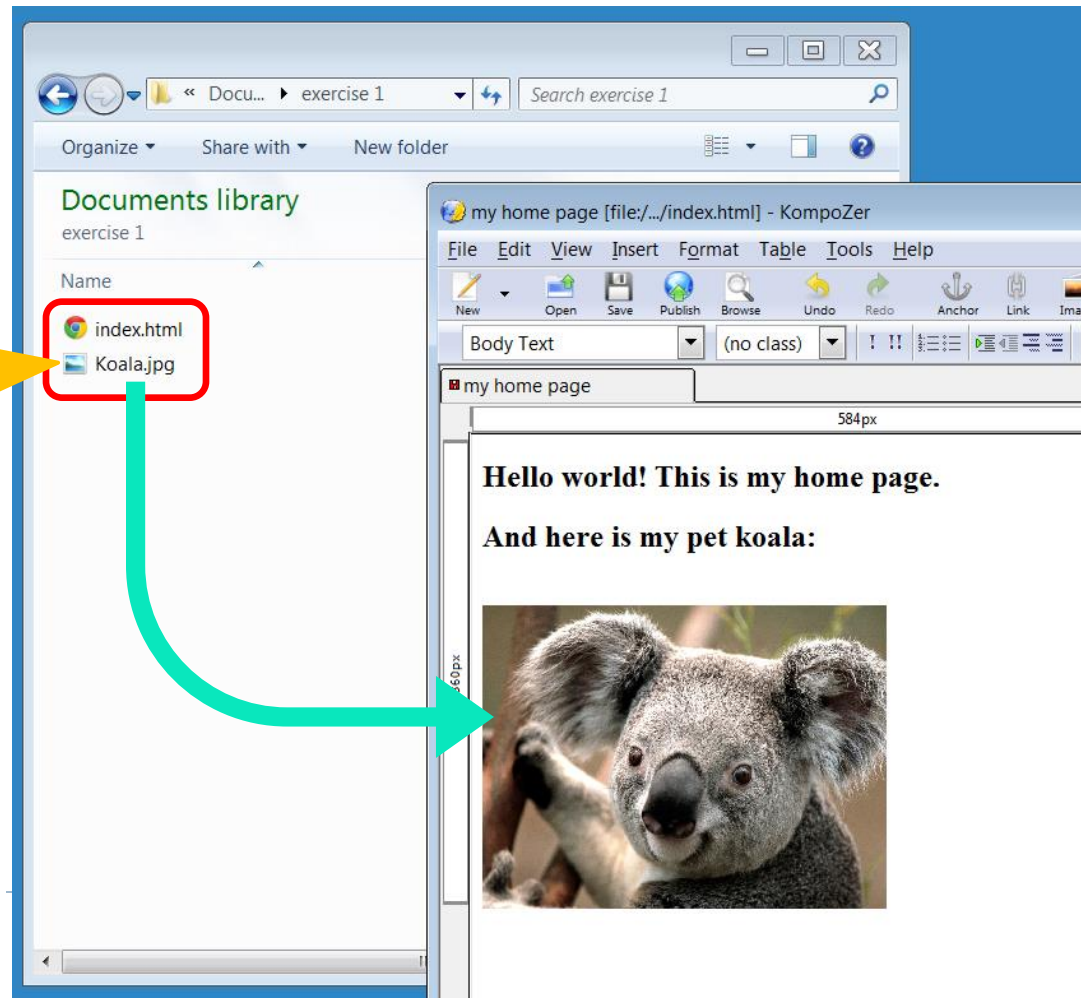


Embedding Photos

- ▶ Putting photos is easy: simple drag-and-drop.
- ▶ BUT! To simplify file management, you should stick to the following.

Before you put any image on your HTML page, **move the image file next to index.html first.** ***And then*** drag it onto the page edit window.

Basically, your HTML file and any image file you reference should be kept in the ****same folder****.

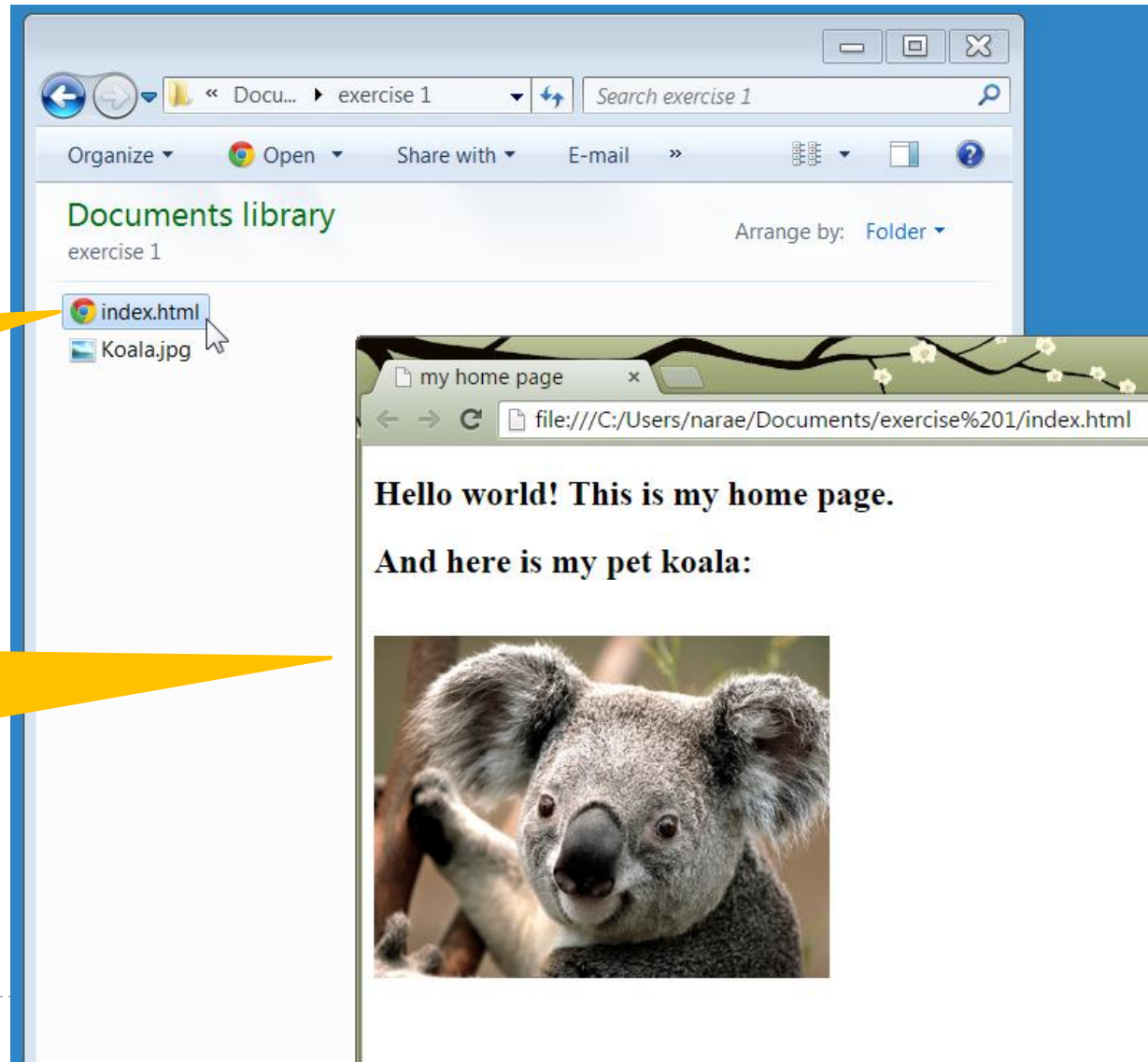


Viewing Page in Browser

- ▶ Saved HTML file can be viewed in a browser.

Double-click your HTML file ...

... and it opens up in your default web browser.
(Chrome in my case.)



Accessing Pitt Server

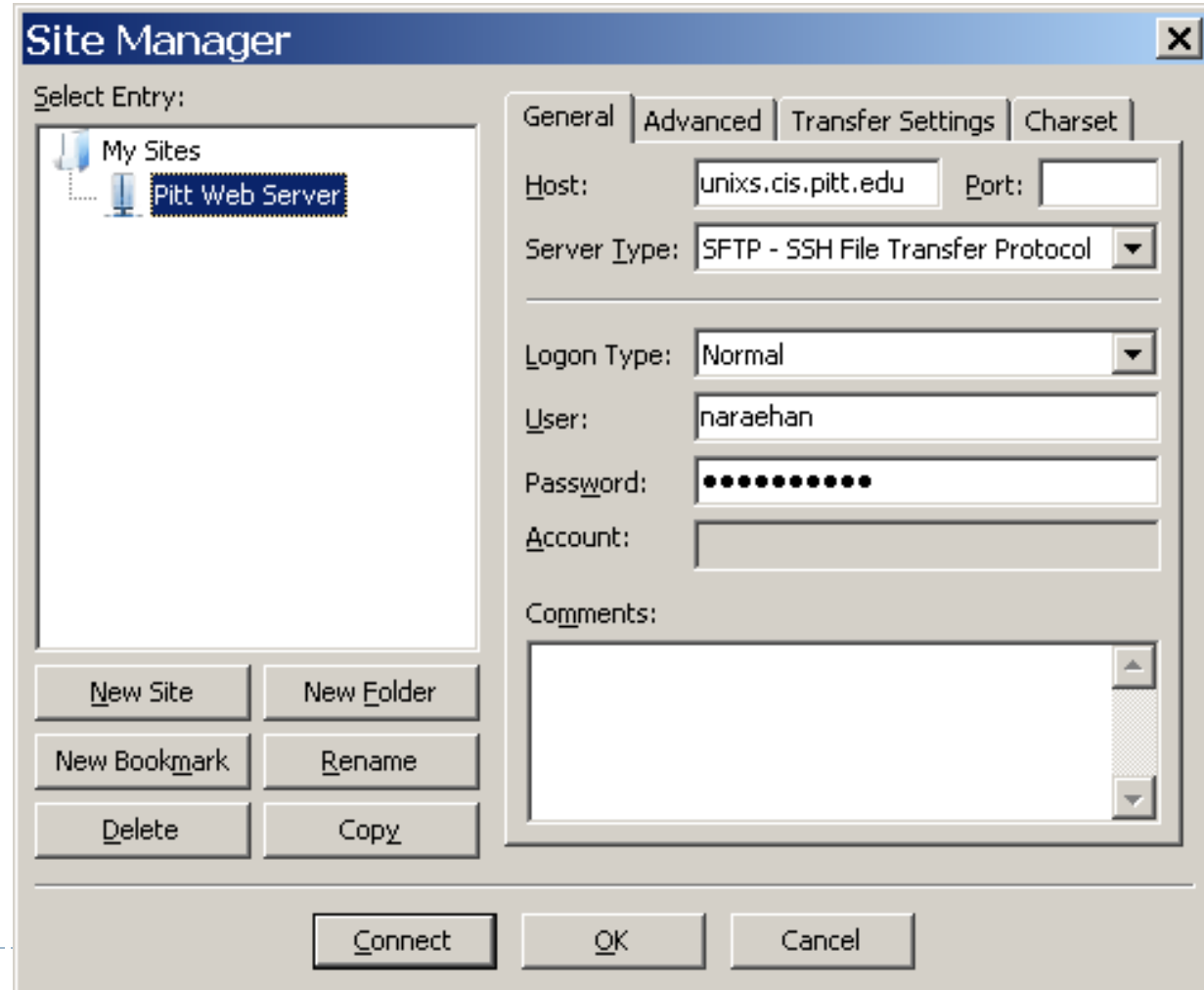
- ▶ Now you need to upload your files onto Pitt server.
- ▶ Needed: a secure ftp client software.
 - ▶ Graphic interface: **Filezilla**
 - ▶ <http://filezilla-project.org/>
 - ▶ http://portableapps.com/apps/internet/filezilla_portable
("Portable" version: no installation necessary.)
 - ▶ Easier to use: directory view, drag-and-drop, etc.

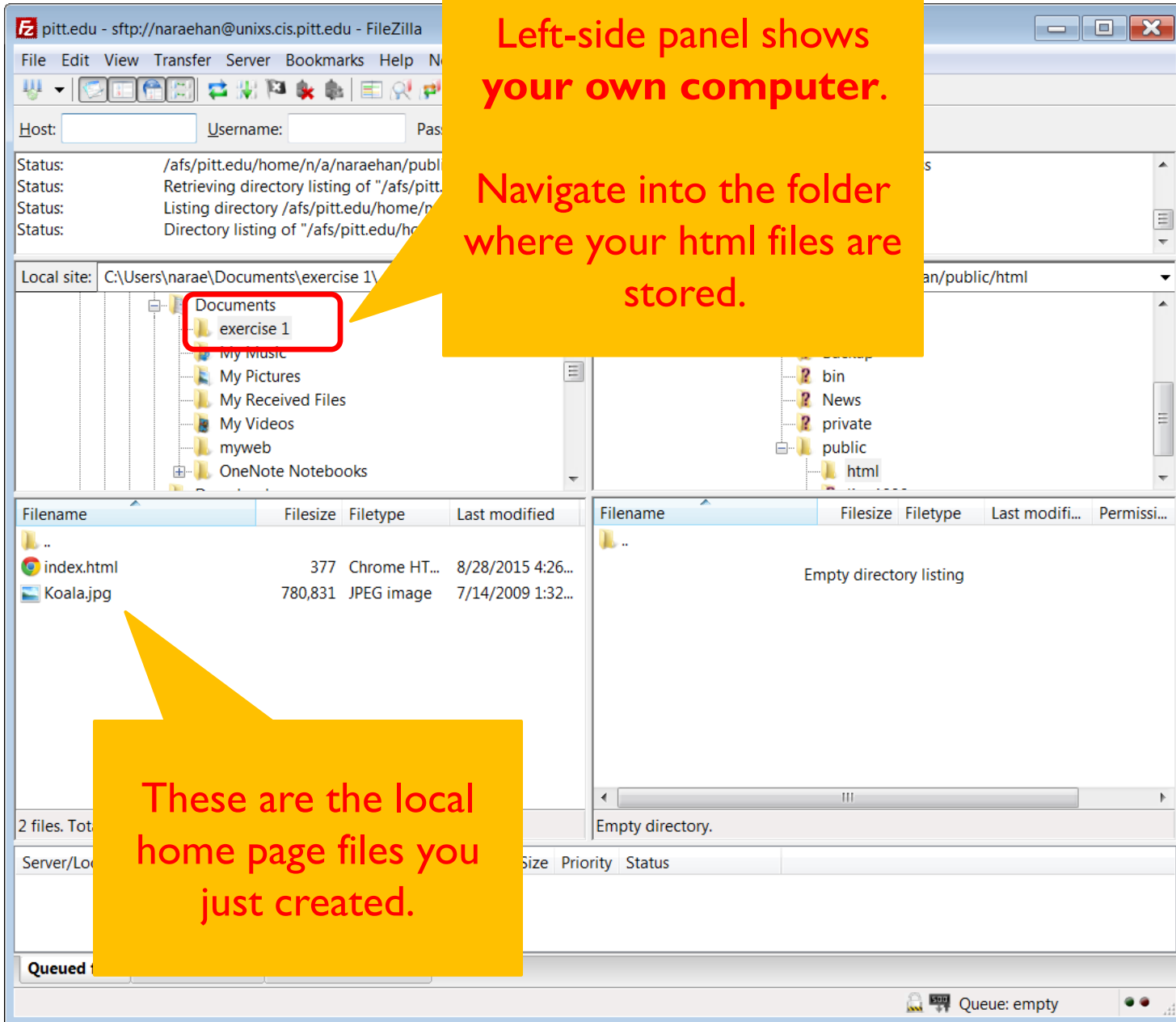


Configuring Server Connection

“Site Manager” Settings:

- ▶ Host:
unixs.cis.pitt.edu
- ▶ Server Type:
SFTP
- ▶ Logon Type:
Normal
- ▶ Supply your
Pitt username
& password
- ▶ And “Connect”!

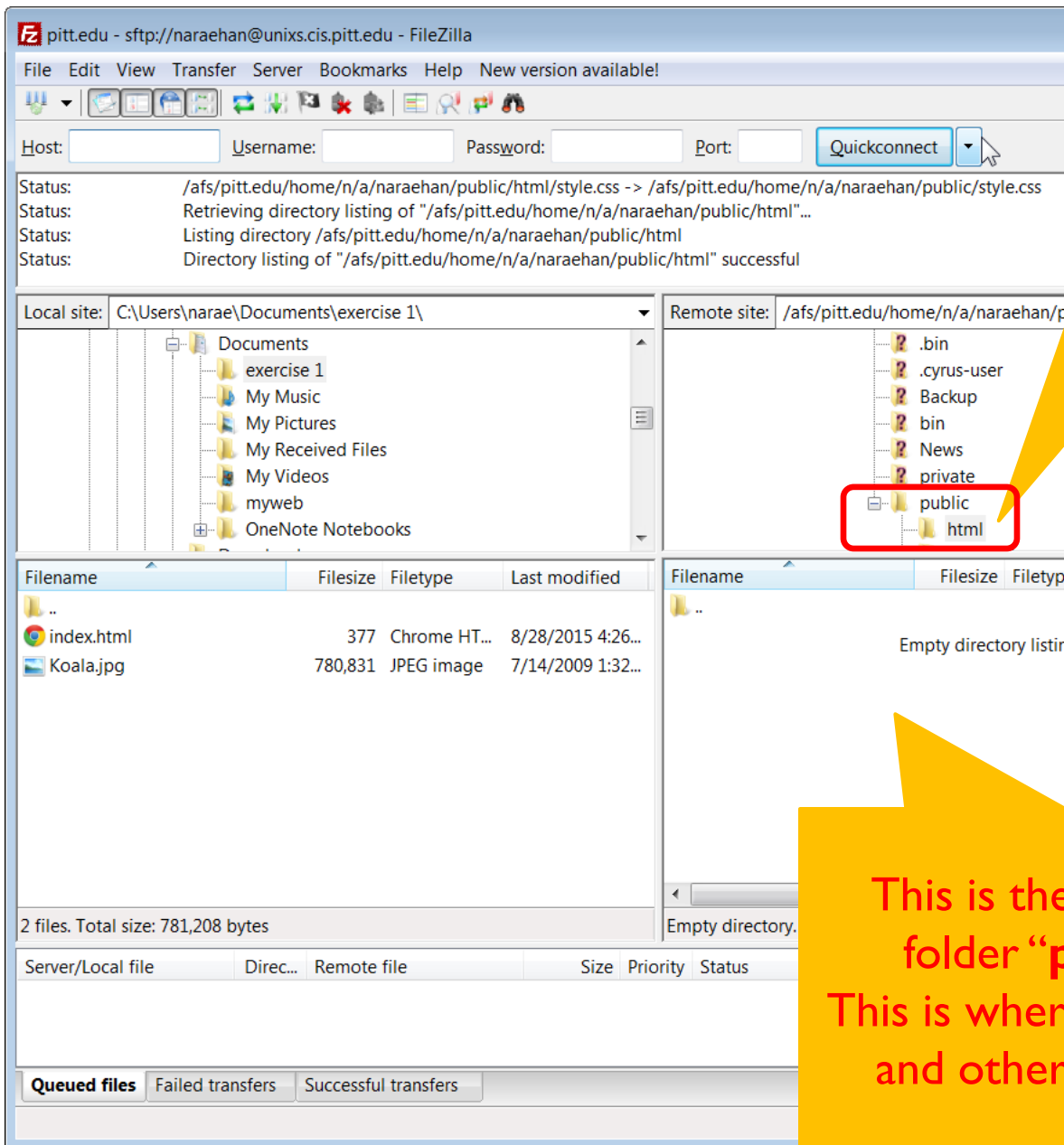




Left-side panel shows your own computer.

Navigate into the folder where your html files are stored.

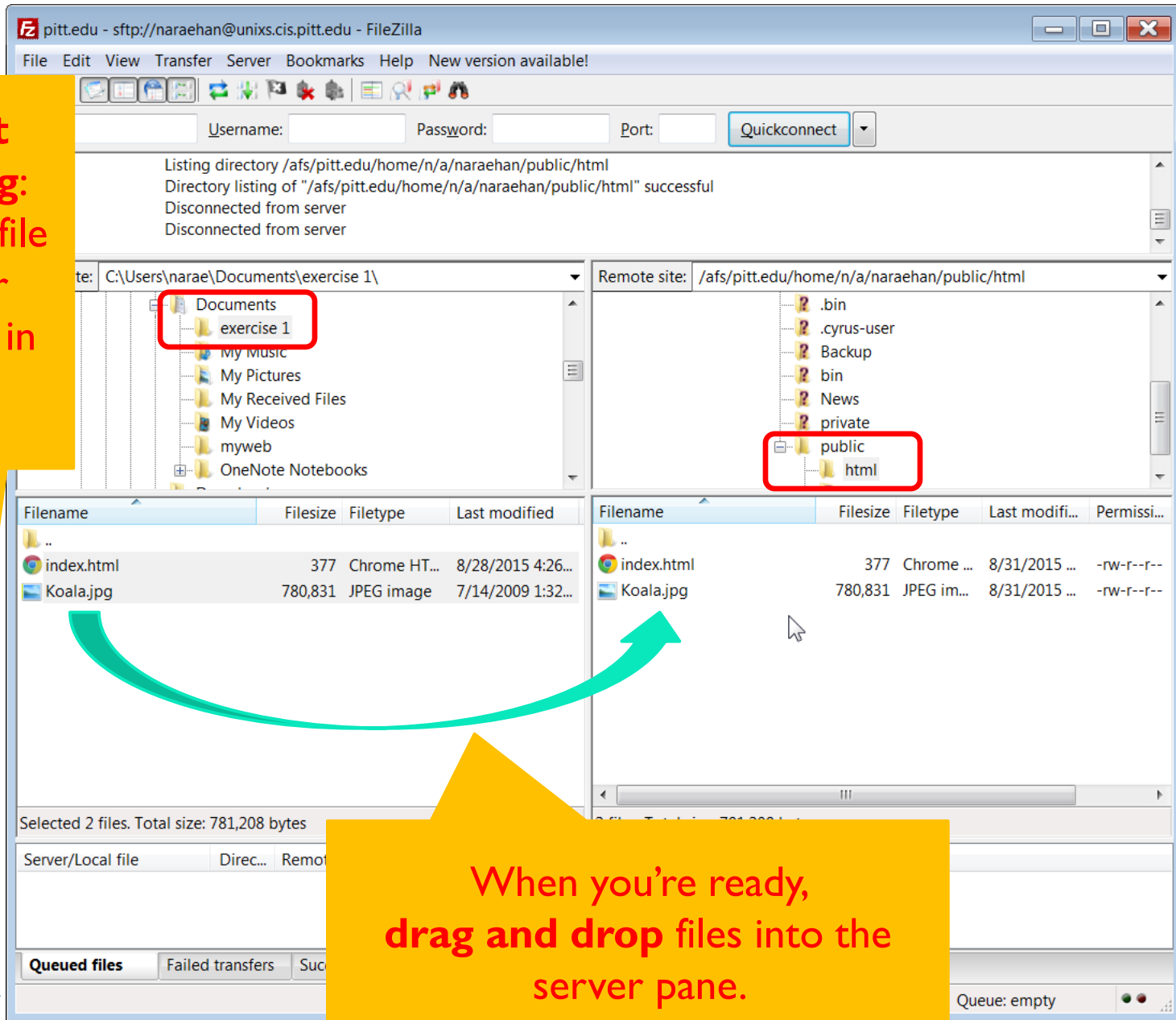
These are the local home page files you just created.



Right side is your personal directory on Pitt's Server.

Navigate into folder **"public"**. And then, create a folder inside **public** called **"html"** unless it's already there.

This is the content of the folder **"public/html"**. This is where your **index.html** and other files should go.



Careful about double-clicking: it will upload the file onto the server directory shown in the right pane.

When you're ready, drag and drop files into the server pane.

Your Homepage is Live!

- ▶ After copying over your web page files, your homepage is instantly published to the web.
- ▶ Open your home address and verify it's there. This is your address:
 - ▶ <http://www.pitt.edu/~username>
 - ▶ If you made another folder, say “class”, under `public/html` and then stored your `index.html` file there, then your address is: <http://www.pitt.edu/~username/class>
 - ▶ If you gave your html file a name other than `index.html`, say `research.html`, then your address is: <http://www.pitt.edu/~username/research.html>

Troubleshooting

- ▶ Is your homepage address correct?
 - ▶ It should be <http://www.pitt.edu/~abc123>, if abc123@pitt.edu is your email address.
- ▶ Did you put your HTML and image files under public/html folder?
 - ▶ “html” folder does not exist initially. You have to first create it inside the “public” folder.
- ▶ Are your image files and HTML files in the same folder?
 - ▶ They should stay in the same folder (unless proper measures are taken first).
- ▶ When you put your image file on your web page, was the image file already in the same folder as your .html file?
 - ▶ Make sure the two files are in the same folder **before** you put the photo on your html page. This ensures that a correct pointer to your image file is entered into your .html file.
- ▶ Files not uploading to server?
 - ▶ See next slide.

Ran Out of Space?

- ▶ You start out with a very small amount of disk space on Pitt server.
- ▶ After uploading a handful of images and documents, your uploading attempts might fail.

"Disk Quota" is the term here. You have exceeded your quota.

- ▶ Solution 1: See if your image files are too big. If so, shrink them down to 800x600 pixels or so.
- ▶ Solution 2: Submit a **Help Desk request** here:
 - ▶ <http://techforms.pitt.edu/helprequest/>
 - ▶ Explain your situation, and ask them to increase your quota on Pitt's shared server.

You Are Done!

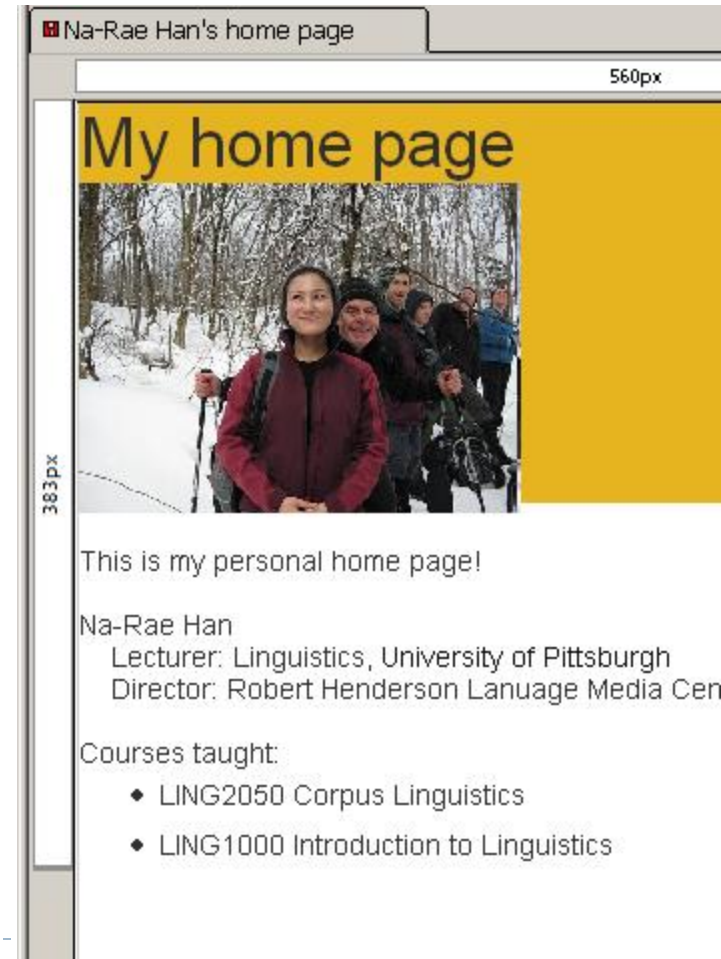
- ▶ You should now have a very basic personal web site hosted on Pitt's domain.
- ▶ Further options:
 - ▶ Make your site pretty by applying web site design elements (CSS)
 - ▶ Give your web site a directory structure by organizing photos and related contents into folders (it was touched on in this tutorial but not covered in depth)
 - ▶ Post documents such as your CV. Best format is PDF.

Adding Design: Using Pitt's Web Template

- ▶ Adding design elements is done by adding “**CSS templates**”
- ▶ Holman's home page uses Pitt's official template:
 - ▶ <http://www.pitt.edu/~hbt3/>
- ▶ Using Pitt's official web templates:
 - ▶ <http://www.communications.pitt.edu/toolbox/web-templates.php>
 - ▶ Download one of the template archives
 - ▶ Open up `index.html` in KompoZer, and edit the file
 - ▶ Keep the directories next to `index.html`: they hold style files, image files, etc.

Adding Design: Free Templates

- ▶ Free ones available online. You can download them and apply to your page.
 - ▶ <http://www.freecsstemplates.org/>
 - ▶ <http://freehomepagetemplates.com/>
- ▶ Download a template and then unzip it.
- ▶ Applying CSS template:
 - ▶ From KompoZer, select CSS Editor
 - ▶ Linked Stylesheet → Choose File
 - ▶ Navigate into the unzipped directory, select “style.css” file
 - ▶ Hit “Create Stylesheet”
 - ▶ Now your homepage looks nicer! →
- ▶ Don't forget to upload the CSS template file and directory onto Pitt server!



Pitt Computing Services Help Pages

- ▶ **General information accessing Pitt servers can be found here:**
 - ▶ <http://technology.pitt.edu/tags/unix-timesharing>
- ▶ **Windows:**
 - ▶ <http://technology.pitt.edu/support/using-ssh-and-sftp-to-access-the-universitys-unix-timesharing-service-with-windows>
- ▶ **Mac:**
 - ▶ <http://technology.pitt.edu/support/using-ssh-and-sftp-to-access-the-universitys-unix-timesharing-service-with-mac>